





Total Cubicle Solutions take pride in providing a personalised, professional and cost effective service

Total Cubicle Solutions can offer a fast turnaround for the tightest of deadlines and having built up a reputation for superb after sales support, our goal is to supply your cubicles with the minimum of fuss, ensuring that from the start to finish, your project runs smoothly.

All this, and the added reassurance that you are dealing with people with over 45 years experience in the industry.

## Why Choose Nubis?

Manufactured from high quality, 13mm compact grade laminate, the Nubis Range is a framed cubicle system designed to meet the most demanding of applications. Its construction utilises braced aluminium pilasters and headrails to provide a robust solution to high traffic areas. Aesthetically, Nubis looks like it performs - strong, sturdy and durable.

We would recommend Nubis for the following applications:

- Hospitals
- Health Centres
- Sports Stadiums
- Schools & Colleges
- HM Prisons
- Night Clubs and Industrial applications

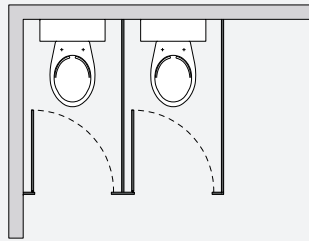
To comply with new Building Regulations, part M, Total Cubicle Solutions has added enlarged and ambulant cubicle options to the Volanet Range. Together with our service promise, you are now in the position to specify, with confidence, a stunning washroom installation for any market sector, at a cost effective price.



# Layout Options

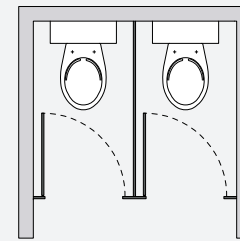
**C/L**

**Corner Layout**



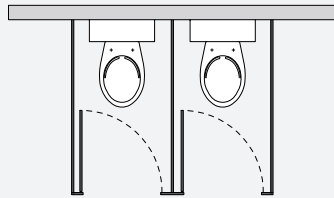
**B/W**

**Between Walls**



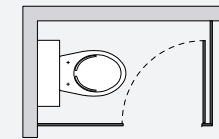
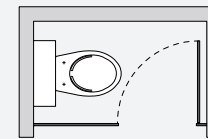
**F/S**

**Free Standing**



**S/I**

**Single In-Line Partition**

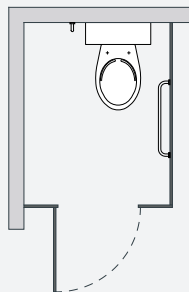


SINGLE IN-LINE  
PARTITION WITH  
OPTIONAL RETURN

**A/C**

**Enlarged Cubicle**

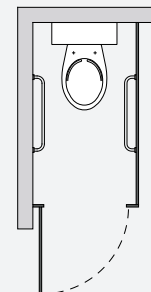
ENLARGED CUBICLES MEASURE A  
MINIMUM OF 1200mm WIDE.  
THE DOOR IS OUTWARD OPENING.



**A/D**

**Ambulant Disabled**

AMBULANT DISABLED CUBICLES  
HAVE AN OUTWARD OPENING  
DOOR.

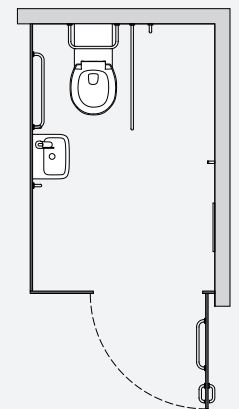


**W/A**

**Wheelchair Accessible**

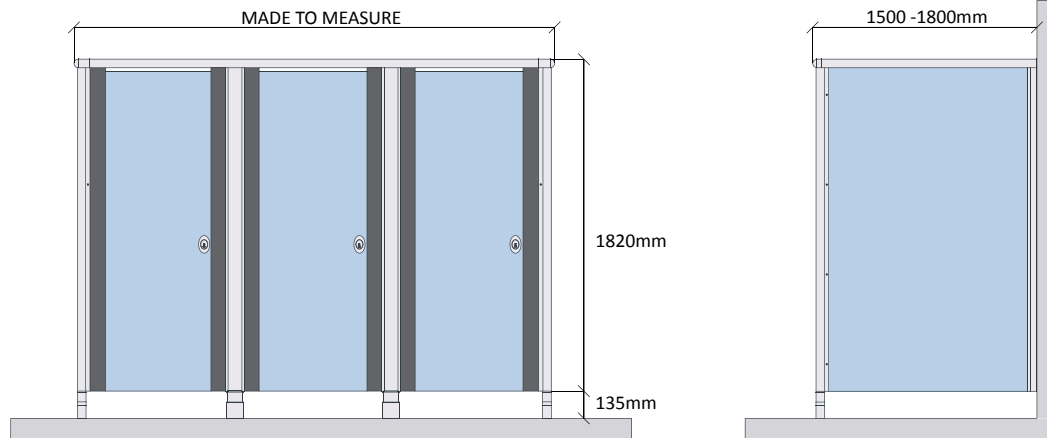
DISABLED ACCESSIBLE WC CUBICLES  
ARE REQUIRED TO HAVE A MINIMUM  
WIDTH OF 1500mm AND A MINIMUM  
DEPTH OF 2200mm.

AN OUTWARD OPENING DOOR MUST  
BE FITTED, PROVIDING A 900mm WIDE  
OPENING.



# Cubicle Design

## Typical Cubicle Dimensions



The Nubis Range of Vanity Cubicles are constructed from high quality 13mm SGL.

We would recommend our Mirage Range for:

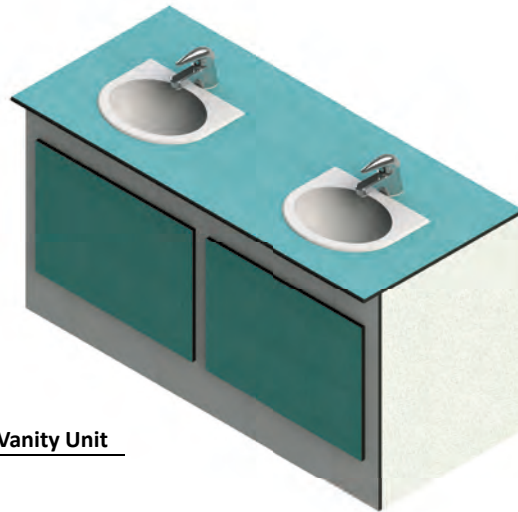
- Hospitals
- Health Centres
- Sports Stadiums
- Schools & Colleges
- HM Prisons
- Night Clubs
- Industrial applications.



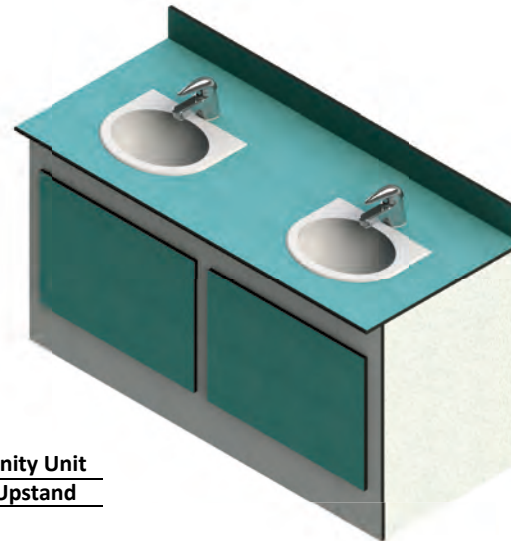


# Vanity Design

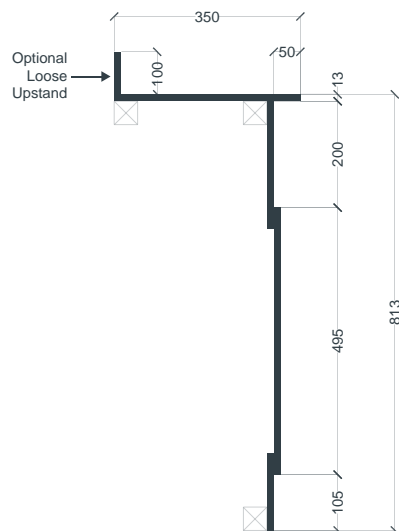
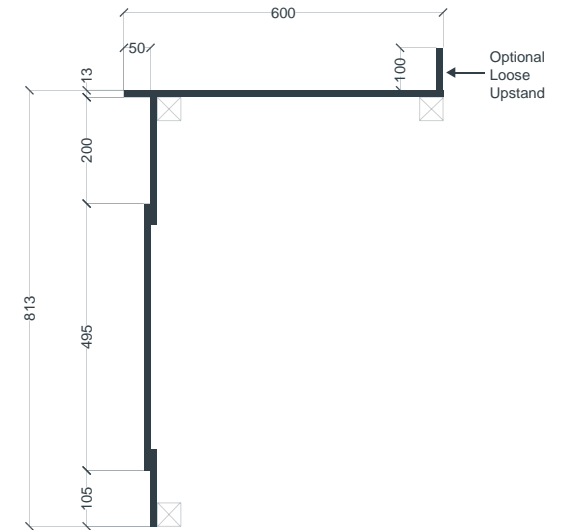
The Nubis Range of Vanity Units has an exceptional resistance to water and impact and is available in matching colours to the Nubis Range of Cubicles. The Vanity is available in Standard and Semi-recessed designs.



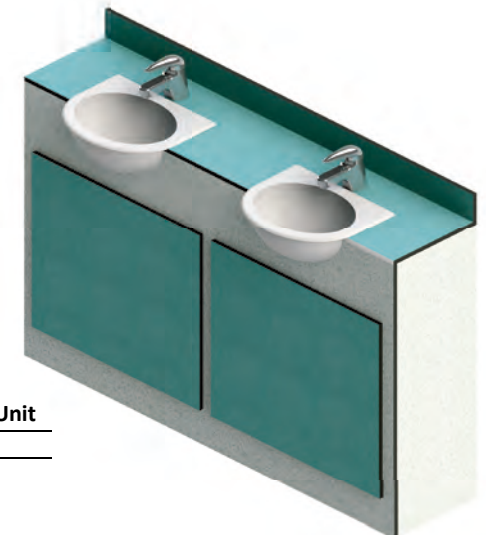
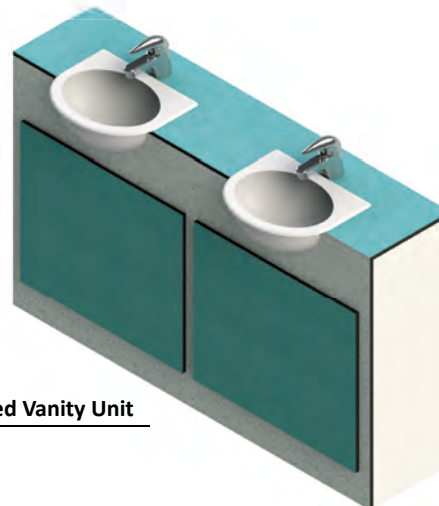
**Standard Vanity Unit**  
**TALVSTD**



**Standard Vanity Unit**  
**with Loose Upstand**  
**TALVSTDLU**



**Semi-recessed Vanity Unit**  
**TALVSR**



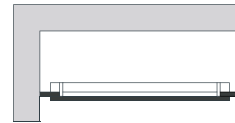
**Semi-recessed Vanity Unit**  
**with Loose Upstand**  
**TALVSRLU**

## IPS Features

The Nubis Range of IPS Units are supplied pre-fitted to softwood frames. The Panels are manufactured from 13mm Solid Grade Laminate and are secured to the frame using Keku Clips - allowing them to be easily removed for maintenance and servicing.



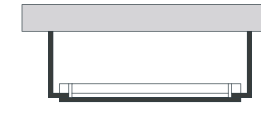
## Typical Layouts



Corner Layout



Between Walls



Free Standing



Hole in the Wall

## Panel Splits

Our IPS Units are suitable for use with Toilets, Urinals and Wash Hand Basins, the overall width and height of our IPS Units are made to measure. As standard our design consists of a 3-panel split of which there are two variants, one designed for WC's and Wash Hand Basins, and the other for Urinals. The diagram below sets out our standard dimensions.



# Fittings - Satin Anodised Aluminium

Nubis fittings are built to stand the test of time. They come in an attractive satin finish to contrast the Nubis Range colour options.

TOILET ROLL HOLDER  
TCTRHold



COAT HOOK  
TCCHOOK



DOOR BUFFER  
TCBUFF



SUPPORT FOOT



LOCK & KEEP



DISABLED HANDLE

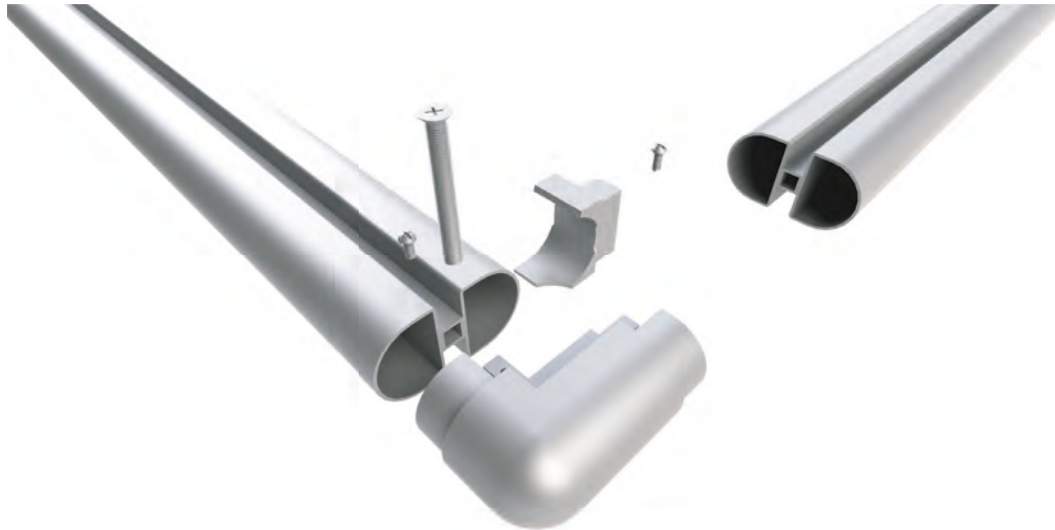


LH & RH DOOR HINGES



# Fittings - Headrail Assembly

**Corner Assembly**



**End Cap Assembly**



**T-Section Assembly**



**Headrail Overview**





## Industry leading Technology

Using a unique digital printing technique Total Cubicle Solutions can personalise Easy-Clad and Shower-Wall panels with your own text and images creating the perfect feature wall.

Not only are the images resistant to UV light helping to maintain their colour even in outdoor conditions, the process also coats the panels in an antibacterial agent.



## Happy to help

If you have any questions regarding our Mirage Range or Digital Print products please feel free to contact us:

## Digital Print Brochure

If you would like further information regarding the Digital Print process and our Digital Print products, please visit our website and download our Digital Print Brochure:

[www.totalcubicles.co.uk/downloads](http://www.totalcubicles.co.uk/downloads)



**Address:** Total Cubicle Solutions  
Units 5-7, Luton Street  
Liverpool, L5 9XR

**Telephone:** 0844 800 7785  
**Fax:** 0844 800 7738  
**Email:** [sales@totalcubicles.co.uk](mailto:sales@totalcubicles.co.uk)  
**Website:** [www.totalcubicles.co.uk](http://www.totalcubicles.co.uk)