



## Why Choose Fast-Fit?

The Fast-Fit Cubicle range is a cost effective cubicle system. Fast-Fit Cubicles are functional, durable and attractive; manufactured in the UK from 19mm Melamine Faced Chipboard to a high standard, they are suitable for low-mid traffic, low-moisture areas. The Cubicles come in three colour options, White, Grey and Cream.



## Who are Total Cubicle Solutions?

Total Cubicle Solutions offer an extensive range of Cubicles, Wall Cladding Boards, IPS duct panels, and Vanity Units. Manufactured in the UK, our innovative products are made to the highest of standards.

Each of our Washroom Systems are crafted to precision by our in-house team allowing you confidence and assurance specifying Total Cubicles for all your Washroom needs. With over 45 years industry experience and a passion for stylish yet affordable Cubicle Solutions, our friendly staff will offer helpful advice on all our products.

## Simple Order Process

There are several ways you can order Fast-Fit Cubicles...

- E-mail our sales team
- Call our sales team
- Fax your enquiry

1

### Choose Your Layout

Fast-Fit Cubicles are designed to accommodate four standard layout options. Determine which best suits your space needs. The four options are detailed overleaf.

2

### Choose How Many Cubicles You Require

Each Fast-Fit Cubicle is manufactured to standard dimensions of 1500 mm deep at 800 mm centres. Determine how many you require to fit your space needs.

3

### Choose The Colours You Require

The Fast-Fit range is available in 3 colours; White, Grey and Cream. The colour of the Doors, Pilasters and Partitions can be specified individually to provide contrasting colour options, i.e. White partitions / Grey doors.



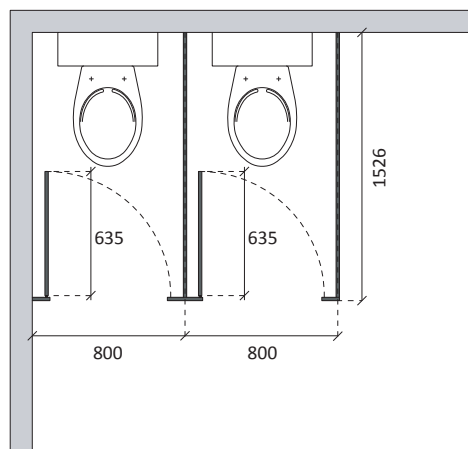
### Express Delivery

Our speedy delivery service ensures that your Cubicles are delivered promptly. Where possible we will endeavour to dispatch your items within 48 hours nationwide.

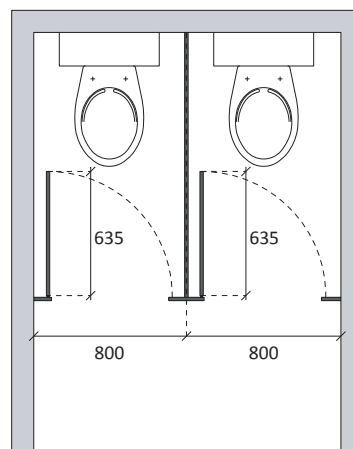
If you prefer, you can also collect your items direct from our Warehouse.

# Standard Layout Options

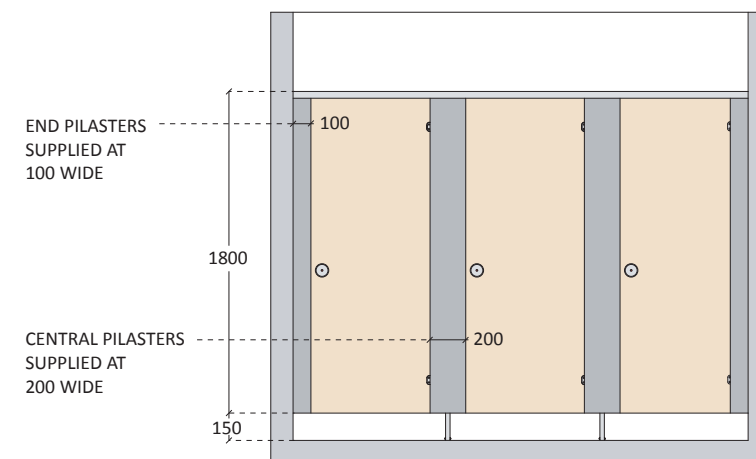
**C/L** Corner Layout



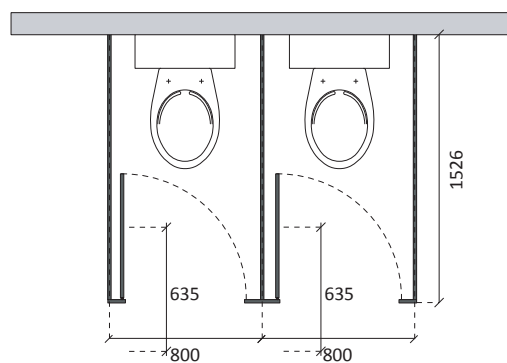
**B/W** Between Walls



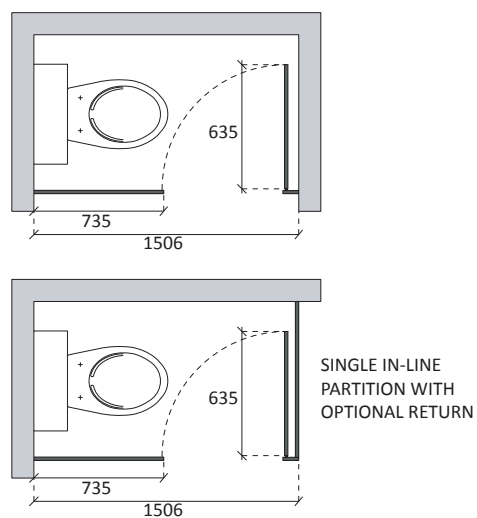
**Typical Front Elevation**



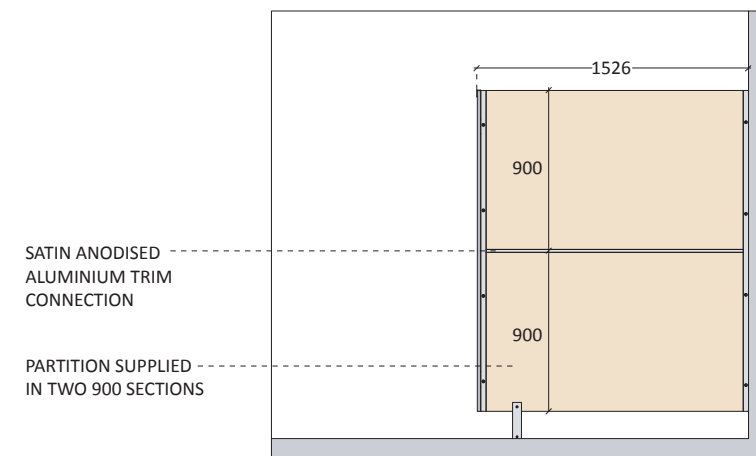
**F/S** Free Standing



**S/I** Single In-Line Partition



**Typical Side Elevation**



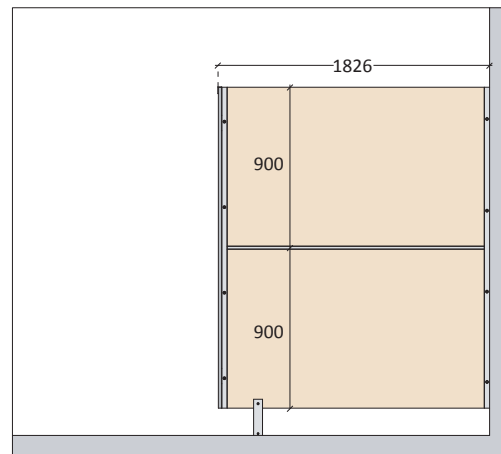
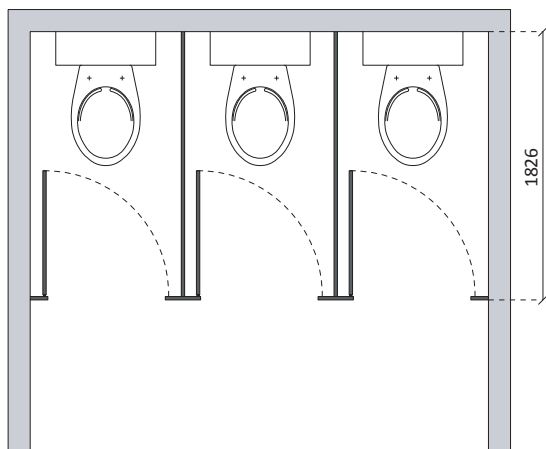
ALL DIMENSIONS ARE QUOTED IN MILLIMETERS

# Optional Extras

## Additional Components

To increase the flexibility of the Fast-Fit range we offer a number of alternative sized components, allowing you to create alternative which are not satisfied by our standard dimensions.

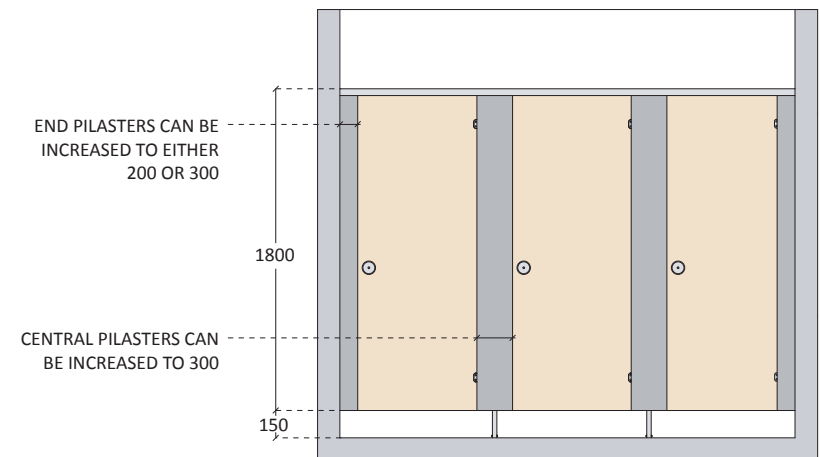
- 200mm optional Pilaster
- 300mm optional Pilaster
- Partitions available at 1800mm deep x 900mm



## Cutting the Components

Our components can be cut to size on-site using suitable carpentry tools to achieve desired sizes.

For instance, should you require partitions at a depth of 1700mm, you can achieve this by purchasing an 1800mm deep partition and trimming 100mm before assembling the cubicles. Placing the Satin Anodised Aluminium trims supplied over the cut edges maintains a clean finish.



If you require any further information regarding our Optional Extras please do not hesitate to contact our technical department.

ALL DIMENSIONS ARE QUOTED IN MILLIMETERS

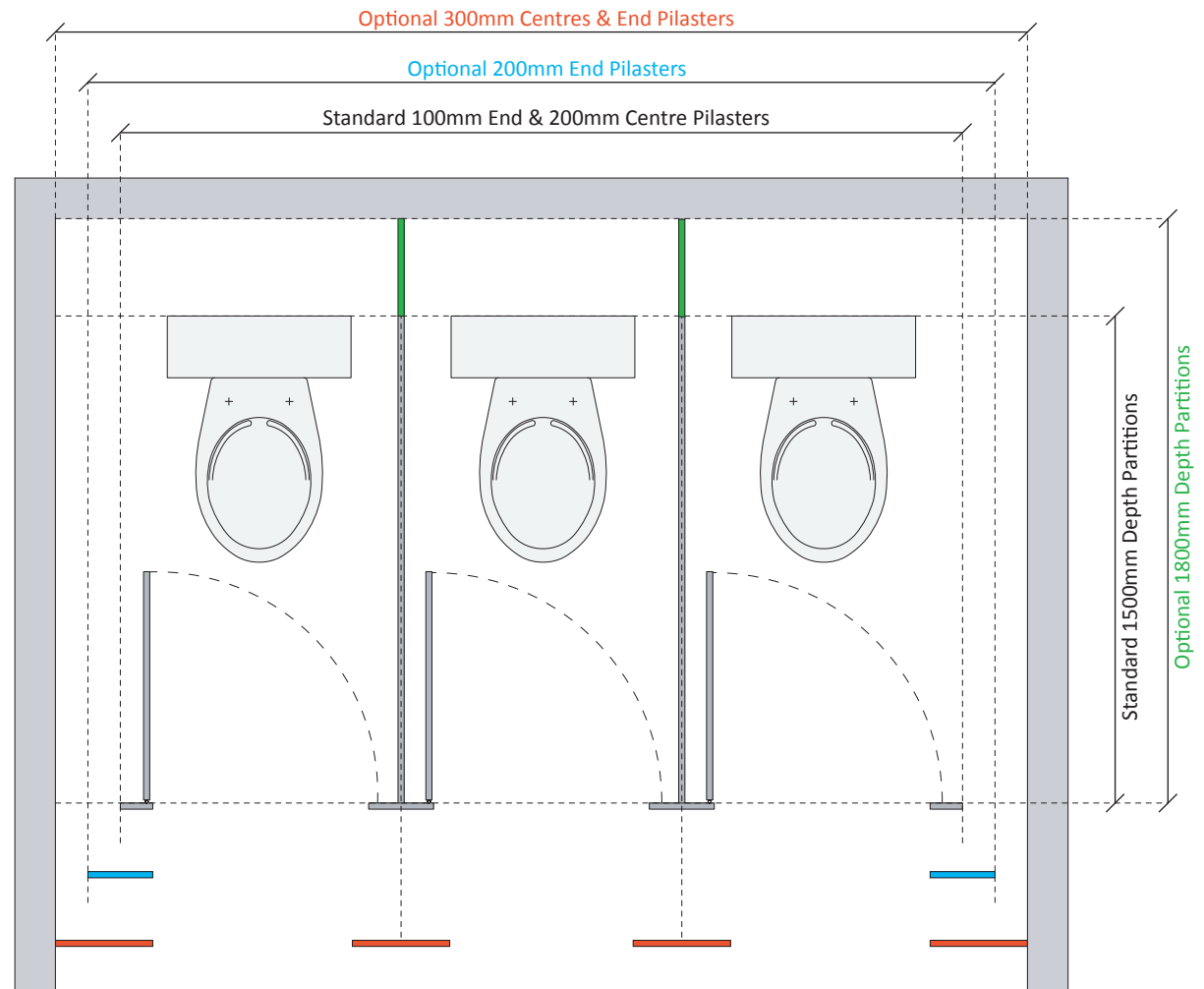
# Optional Extras

## Accommodating Bigger Rooms

Our additional components can be configured with all of our layout options:

- Corner Layout
- Between Walls
- Free Standing
- Single In-Line Partition

Any combination of additional extras can be used to achieve your bespoke layout.



ALL DIMENSIONS ARE QUOTED IN MILLIMETERS

# Fast-Fit Specifications

## Cubicle Specification

<b>Material:</b>	Melamine Faced Chipboard
<b>Thickness:</b>	19 mm
<b>Edging Material:</b>	2 mm PVC in matching colour
<b>Suitability of Use:</b>	Low-Mid traffic, Low moisture areas
<b>Fittings:</b>	Satin Anodised Aluminium
<b>Overall Dimensions:</b>	1500 mm deep, 800 mm centres

## Colour Options

The colour of the Doors, Pilasters and Partitions can be specified individually.



White



Grey



Cream

## Fittings

All fittings required to assemble your Fast-Fit Cubicle System are supplied in Satin Anodised Aluminium. This includes Brackets, Hinges, Headrails, Screws, Bolts, Legs, Locks, Coat Hooks and Toilet Roll Holders. Please note, Fast-Fit Cubicles are supplied flat-packed for assembly on-site.

Replacement fittings can be ordered from our fittings website:  
**[www.cubiclefittings.com](http://www.cubiclefittings.com)**



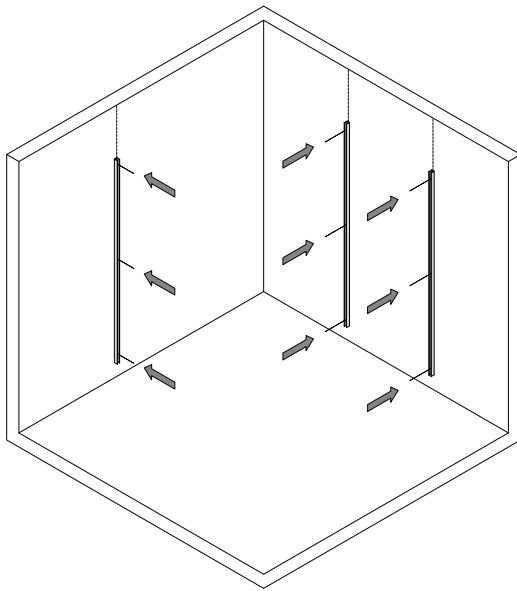
## Contact Details

<b>Address:</b>	Total Cubicle Solutions Units 5-7, Luton Street Liverpool, L5 9XR
<b>Telephone:</b>	0844 800 7785
<b>Fax:</b>	0844 800 7738
<b>Email:</b>	<a href="mailto:sales@totalcubicles.co.uk">sales@totalcubicles.co.uk</a>
<b>Website:</b>	<a href="http://www.totalcubicles.co.uk">www.totalcubicles.co.uk</a>

# Fast-Fit Cubicle - Assembly Instructions

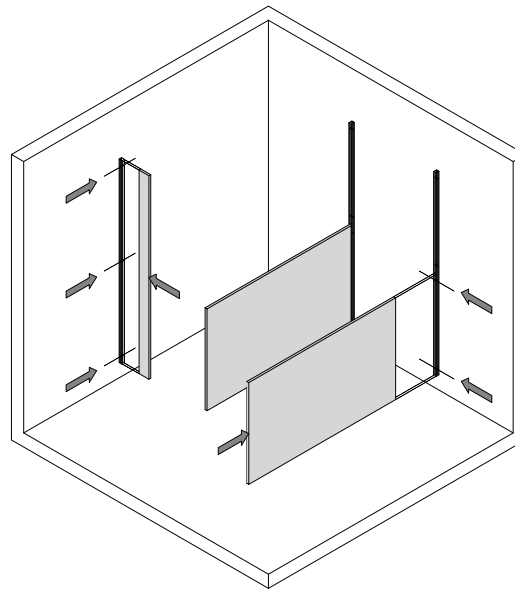
1

Set the Channel Brackets 135mm off the finished floor level, fixing at the locations shown.



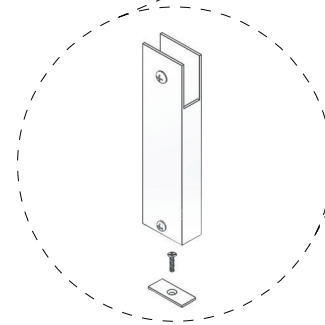
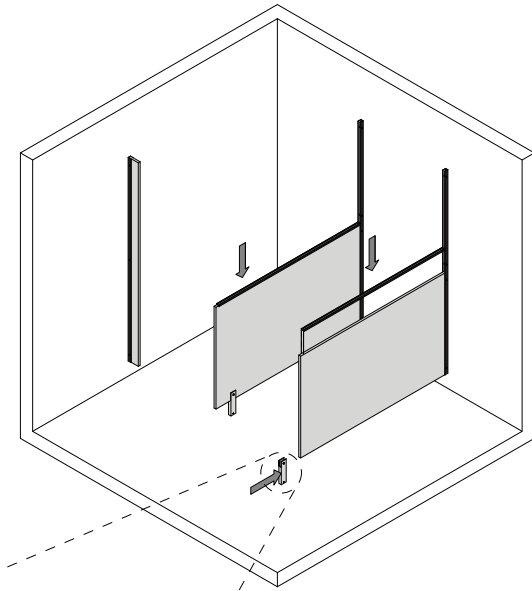
2

Slot End Pilasters and Partition Panels into the Channel Brackets and fix in positions as shown below.



3

Fix legs to the partitions and clip H-Section Brackets to the top of the Partition Panels as shown below. The H-Sections can be screwed into the top of the Partition Panels for extra strength and security.

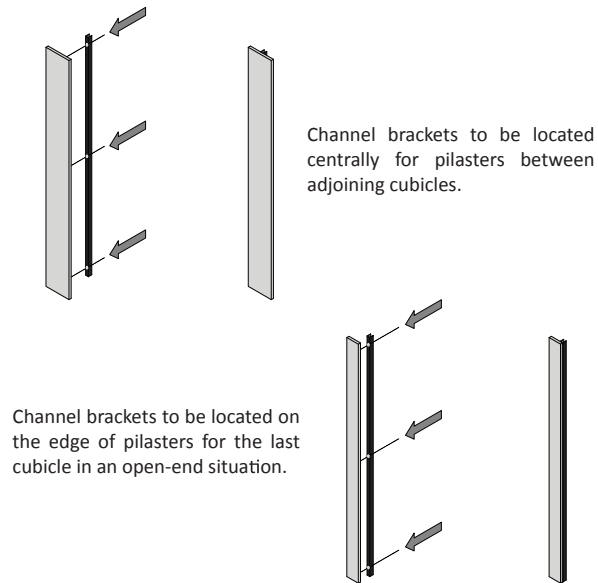


Please note: We no longer pre-drill the partitions as Soil Stacks, and Window positions can compromise the fitting position. Normally our Cubicles are divided equally along the wallspace except where Ambulant or Disabled Cubicles are to be implemented. Channel Brackets are provided at standard lengths and may need cutting to size. These instructions show a typical Twin Open End cubicle arrangement, your specific layout may differ but the principals remain the same.

# Fast-Fit Cubicle - Assembly Instructions

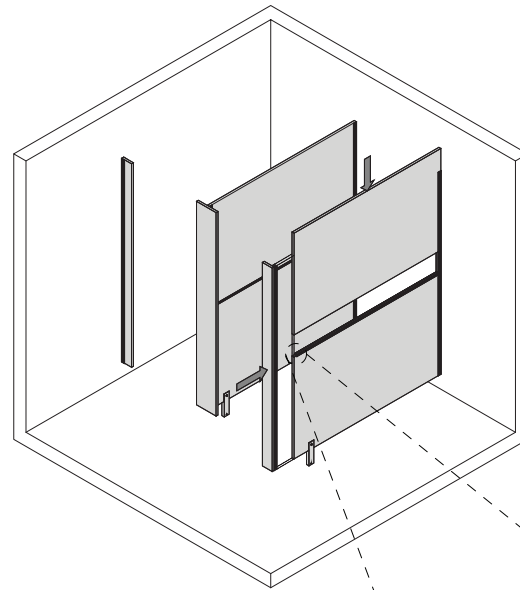
4

Fix Channel brackets to the rear of Pilasters as shown below.



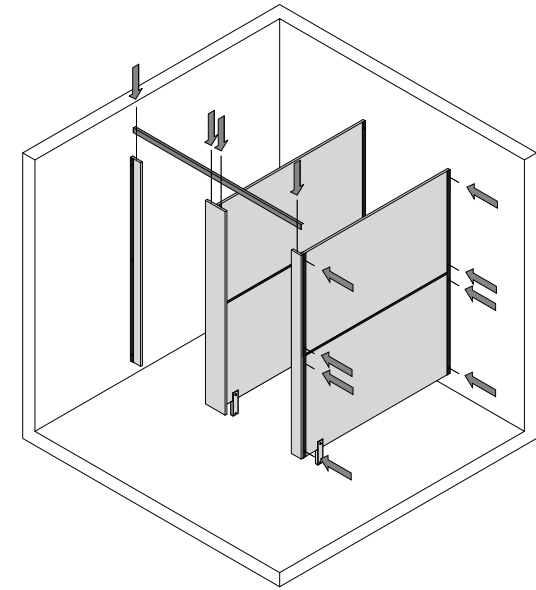
5

Fix second Partition Panel into the H-section as shown below. Offer up Pilasters to the end of the Partition Panels.



6

Fix Head Rail into top of Pilasters and x through Channel Brackets on the Pilasters to Secure in place.

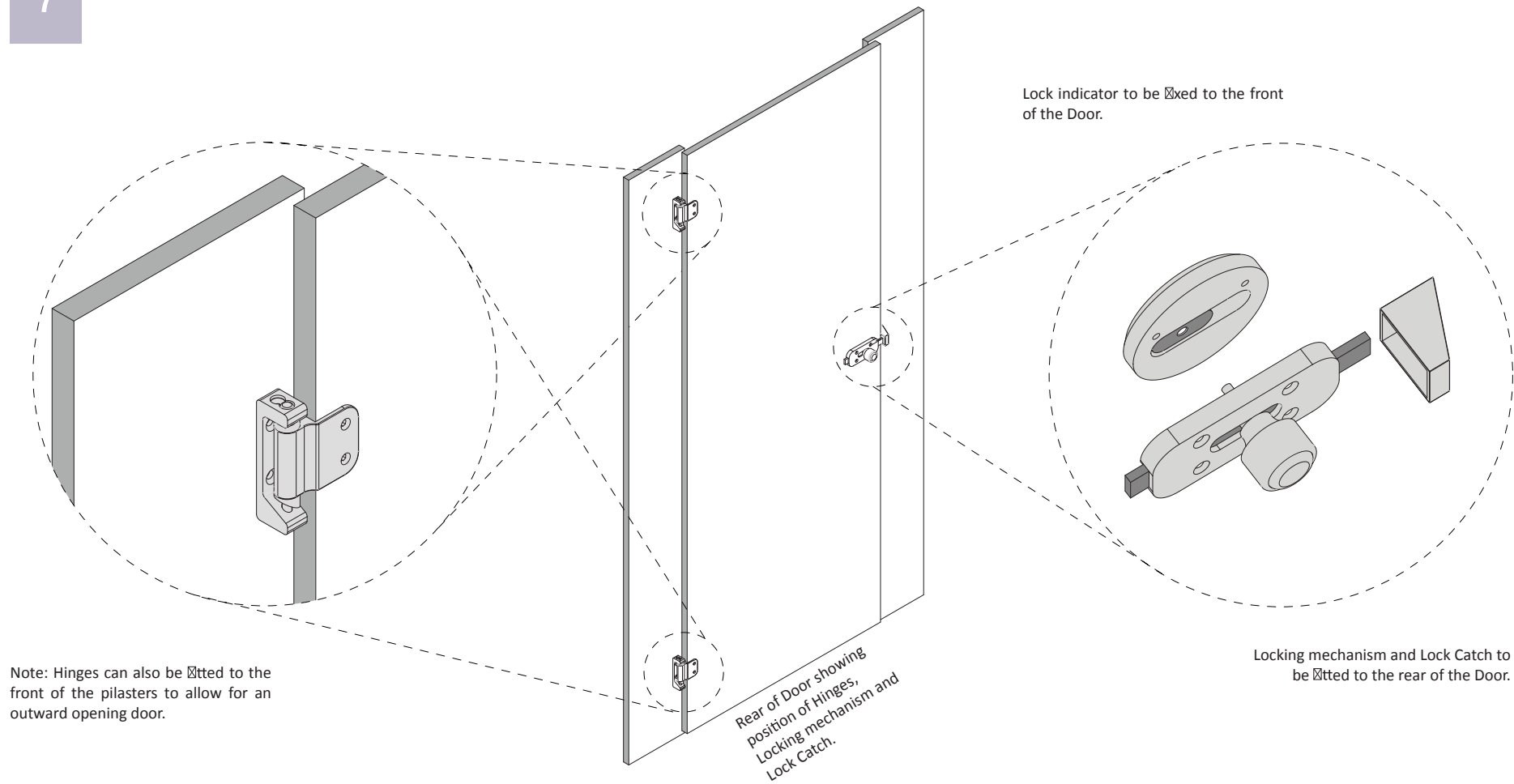




# Fast-Fit Cubicle - Assembly Instructions

7

Fix Door fittings as shown below.



# Vanity Units

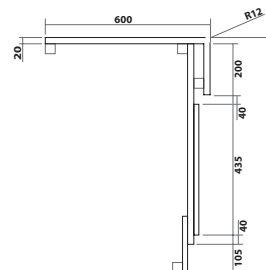
The Fast-Fit Range of vanity units has an exceptional resistance to water and impact. They are available in matching colours to the Fast-Fit range of cubicles.



## Vanity Unit Layout Options

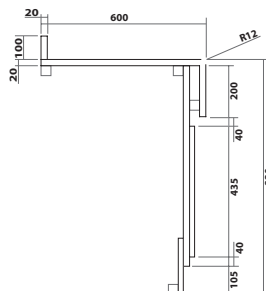
### Standard Vanity Unit

FFVSTD



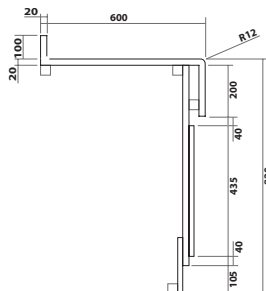
### Standard Vanity Unit with Loose Upstand

FFVSTDLU



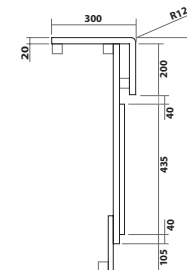
### Standard Vanity Unit with Coved Integral Upstand

FFVSTDUCU



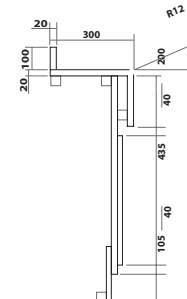
### Semi-recessed Vanity Unit

FFVSR



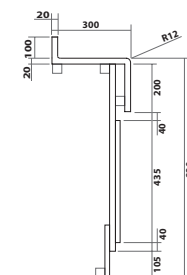
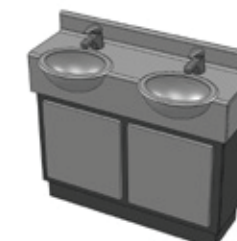
### Semi-recessed Vanity Unit with Loose Upstand

FFVSRULU



### Semi-recessed Vanity Unit with Coved Integral Upstand

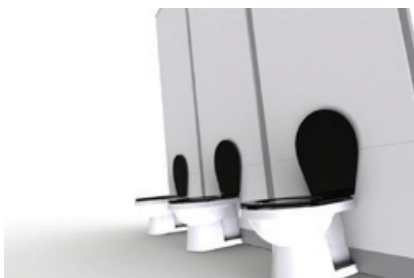
FFVSRUCU



ALL DIMENSIONS ARE QUOTED IN MILLIMETERS

# IPS Panels

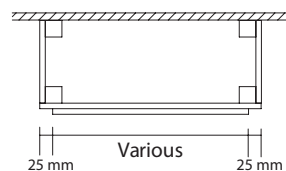
The Fast-Fit range of IPS units has an exceptional resistance to water and impact.



## IPS Layout Options

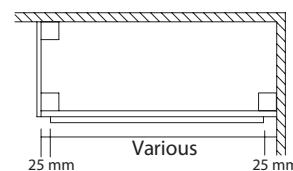
### Free Standing

(FS)



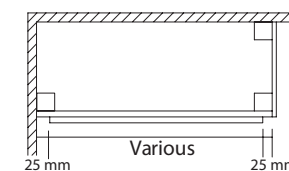
### Open Ended Left

(OELH)



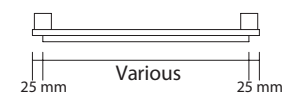
### Open Ended Right

(OERH)



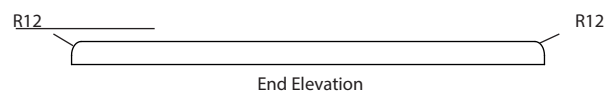
### Hole In Wall

(HIW)



## Panel Options

**Postformed** - available on parallel edges only



**PVC**

