

INTERIOR PANELS

Think Trespap



Trespa North America Ltd. website, www.trespa.com/na. A copy of these general conditions of sale will be provided free of charge on request.

All general terms and conditions other than the conditions mentioned above are dismissed and do not apply, regardless of whether such terms and conditions are referred to on requests for offers, offer confirmations, stationary and/or other documents of the other party, even if Trespa does not expressly object to such terms and conditions.

Intellectual property
All intellectual property rights and other rights regarding the content of this document (including logos, text and photographs) are owned by Trespa and/or its licensors. Any use of the content of this document, including distribution, reproduction, disclosure, storage in an automated data file or the dispatch of such a file without Trespa's prior written consent is explicitly prohibited.
© Trespa, Meteon, Athlon, TopLab, TopLab^{plus}, TopLab^{eco-fibre}, Virtuon, Volkern, Trespa Essentials and Mystic Metallics are registered trademarks of Trespa.

Questions
Should you have any questions or comments, please do not hesitate to contact Trespa.

www.Trespa.com

Trespa/Arpa Design Centre Barcelona
Calle Ribera 5,
08003 Barcelona
Spain
Tel: +34 (0) 93 295 4193
Fax: +34 (0) 93 116 3300
TDC.Barcelona@Trespa.com
www.Trespa.com/TDC

Trespa Design Centre Santiago
Eliodoro Yáñez 2831
Torre A - Local 1
Providencia - Santiago
Chile
Tel: +56-2-4069990
TDC.Santiago@Trespa.com
www.Trespa.com/TDC

Projects on cover:
Koch + Partners Architekten und Stadtplaner, Germany
De Gregorio A. & Partners Architectenbureau, Belgium
Europa Park Rust Planungsuro, Germany

Liability
Trespa is not liable (neither contractual nor non-contractual) for any damage arising from or related to the use of this document, except if and to the extent that such damage is the result of wilful misconduct or gross negligence on the part of Trespa and/or its management. The limitation of liability applies to all parties affiliated with Trespa, including but not limited to its officers, directors, employees, affiliated enterprises, suppliers, distributors, agents, and representatives.

General conditions
All oral and written statements, offers, quotations, sales, supplies, deliveries and/or agreements and all related activities of Trespa are governed by the Trespa General Terms and Conditions of Sale (*Algemene verkoopvoorwaarden Trespa International B.V.*) filed with the Chamber of Commerce and Industry for Noord- en Midden-Limburg in Venlo (NL) on 11 April 2007 under number 24270677, which can be found on and downloaded from the Trespa website, www.trespa.com.
All oral and written statements, offers, quotations, sales, supplies, deliveries and/or agreements and all related work of Trespa North America, Ltd. are governed by the Trespa General Terms and Conditions of Sale, which can be found on and downloaded from the

VISIT US

Trespa Design Centre New York
62 Greene Street (Ground Floor)
New York, NY 10012
United States of America
Tel: 1-212-334-6888
Fax: 1-866-298-3499
TDC.NewYork@Trespa.com
www.Trespa.com/TDC

Trespa Design Centre Weert
Wetering 20
6002 SM Weert
The Netherlands
Tel: +31 (0) 495 458 845
TDC.Weert@Trespa.com
www.Trespa.com/TDC

and are not representative of characteristics of the Trespa products. Trespa's products and samples are produced within the specified colour tolerances and the colours (of production batches) may differ, even if the same colour is used. The viewing angle also influences the colour perception. Metallics panels feature a surface whose colour appears to change based on the direction from which it is viewed. The specified colour stability and colour specifications relate only to the decorative surface of the Trespa products, not to the core material and samples of the Trespa products. Trespa products are delivered ex-works with straight, sawn sides.

Customers and third parties must have a professional adviser inform them about (the suitability of) the Trespa products for all desired applications and about applicable laws and regulations. Trespa does not warrant the above.

The most recent version of the current delivery programme and the Material Properties Datasheet can be found at www.trespa.info. Only the information in the most recent and valid Material Properties Datasheet should be used to select and provide advice regarding Trespa products. Trespa reserves the right to change (the specifications for) its products without prior notice.

DISCLAIMER

General
These terms apply to the use of this document and such use automatically means that the other party agrees to these terms. The information provided by Trespa International B.V. ("Trespa") in this document is solely indicative. Trespa is unable to warrant the accuracy and completeness of this information. Trespa may change the information included in this document at any time and without further notice. Trespa's customers and third parties must ascertain that they have the most recent document (for the most recent version, please consult: www.trespa.com). No rights can be derived from the information provided; the use of the information is at the other party's risk and responsibility.

Trespa does not warrant that the information in this document is suitable for the purpose for which it is consulted by the other party. This document does not contain any design, structural calculation, estimate or other warranty or representation that customers and third parties may rely on. This document does not guarantee any properties of Trespa products. Colours used in Trespa's communications (including but not limited to printed matter) and in samples of Trespa's products may differ from the colours of the Trespa products to be supplied. Samples are not intended for use in product tests

CONTACT US

Trespa International B.V.
P.O. Box 110, 6000 AC Weert
Wetering 20, 6002 SM Weert
The Netherlands
www.Trespa.com

Customer Service Desk EMEA Export
Tel: +31 (0) 495 458 359 / 573
Fax: +31 (0) 495 458 383
Info.Export@Trespa.com

Arpa UK Ltd
Block 3, Parkhall Business Village,
Park Hall Road, Longton
Stoke-on-Trent ST3 5XA
Great Britain
Tel: +44 (0) 1782 332 368
Fax: +44 (0) 1782 331 876
arpa.uk@arpaindustriale.com

For information regarding scientific furniture in the United Kingdom please contact:
Info.UK@Trespa.com
Tel: +44 (0) 1952 290 707

Trespa North America Ltd.
12267 Crosshwaite Circle
Poway, CA 92064
United States of America
Tel: 1-800-487-3772
Fax: 1-858-679-9568
Info.NorthAmerica@Trespa.com

Trespa China Co. Ltd.
Room 2604-05, HuaiHai Plaza
No. 1045 HuaiHai Road (central)
Shanghai 200031
P.R. China
Tel: +86 (0) 21 6288 1299
Fax: +86 (0) 21 6288 1296
Info.China@Trespa.com

Customer Service Desk Asia/Pacific
Tel: +86 (0) 21 5465 8388
Fax: +86 (0) 21 5465 6989
Info.APAC@Trespa.com

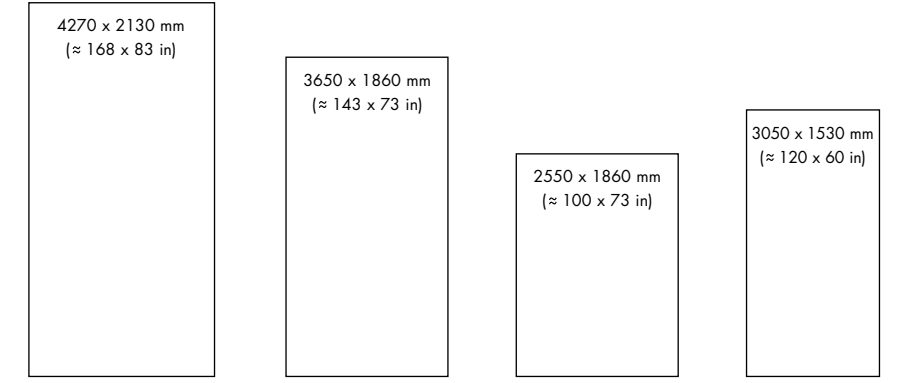
For information regarding scientific furniture in other countries please contact:
ScientificFurniture@Trespa.com
Tel: +31 (0) 495 458 412

Your Trespa representative :

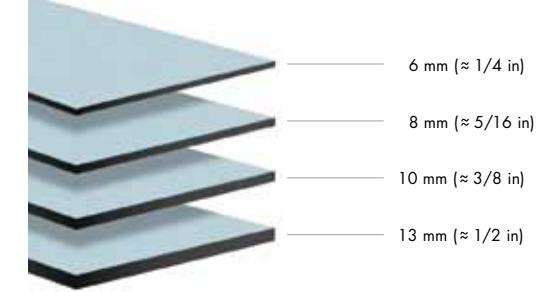
code: U4454 version 1.0
date: 31-05-2012 copies: 1,600

TRESPA® VIRTUON®

Panel size:



Panel thickness:



Panel type:

- = Single sided: decorative side with non-decorative black reverse
- ▣ = Double sided decorative
- ▤ = Duocolour: different colour for front and reverse side of the panel



Please check www.trespa.info for the detailed and up to date Delivery Programme and Material Property Datasheet.



Respect for our environment

Trespa strongly believes that any change should start with the company itself. Trespa's approach towards sustainability starts from an objective and fact based analysis of its environmental footprint along the entire value chain, including a recurring Life Cycle Analysis (LCA) according to ISO 14040. Trespa continuously strives to reduce its impact on the environment, by reduction of upstream contributions from raw material production and transport, onsite emissions, and primary energy use. For the latest status, please visit www.trespa.com.



About Trespa

Trespa International B.V. is a leading innovator in the field of architectural materials, recognised internationally as the premier developer of HPL panels and related building systems. Founded in 1960 and with headquarters in the Netherlands, Trespa manufactures high-performance Trespa® panels for the worldwide market. Trespa's focus is on product development, combining quality manufacturing technologies with intelligent solutions for architectural applications. Our global sales organization is complemented by a network of local agents and distributors, bringing regional insights to each customer's needs.



Version 1.0

TRESPA® VIRTUON® – UNIQUE SURFACES FOR CLEAN, DURABLE AND ATTRACTIVE INTERIORS

The importance of hygiene has long been recognised by designers and owners of many interior environments. The rising cost of janitorial and maintenance services drives the need for surfacing materials that resist bacterial growth, and allow quick and effective cleaning. In addition, interior surfaces must be durable and robust while helping to create a pleasant and attractive ambience.

As the leading producer of world-class architectural materials, Trespa offers resilient and colourful products – an innovative interior solution engineered for exceptional performance in hygiene, cleanliness and design freedom. From healthcare facilities and public buildings to transport terminals and retail settings, think Trespa® Virtuon®.

Quality and durability

Trespa® Virtuon® is a decorative high-pressure compact laminate (HPL) with a surface manufactured using Trespa's unique in-house technology, Electron Beam Curing (EBC). Developed for demanding interior applications, Trespa's underlying technology combines wood-based fibres with thermosetting resins under high pressure and at high temperatures, transforming them into robust panels that meet the most exacting specifications. The unique properties of Trespa® Virtuon® make them highly durable with a long life of retained appearance.

Proven effectiveness

Many architects and interior designers around the world have already experienced how Trespa® Virtuon® panels can help create striking aesthetics with exceptional hygiene performance. A broad range of interior projects have demonstrated the long-lasting visual impact achieved, even in environments where bacteria and dirt pose a real threat. In hospitals and healthcare facilities, transportation and sports centres, and retail and cultural venues, Trespa® Virtuon® delivers a track record of effective surfaces.

Designed for frequent cleaning

More than ever, building owners and operators employ regular and frequent cleaning regimens to deliver the highest levels of hygiene in demanding interior environments. Because of its closed EBC composition, Trespa® Virtuon® surfaces are smooth and show significantly low dirt pick up – thus making the product easy to clean and disinfect. Panels can be produced in a variety of sizes¹, including an exceptionally large 4270 x 2130 mm (± 168 x 83 in), which minimises the number of joints and connections needed.

Its dense and homogeneous core leaves crisp, clean edges and uniform openings when the products are machined using standard carpentry tools. Switches, controls and other openings can be cleanly slotted into the panels, and floor-to-wall joints can be made flush. These properties minimise the dirt entrapment and enables effective and easy cleaning methods.

Resistant to bacteria

Trespa® Virtuon® has inherent antibacterial properties, without the addition of antimicrobial additives. An independent test by the British Industrial Microbiological Services Ltd (IMSL) shows a near elimination of certain bacteria after 24 hours.²

Visual and tactile choices

With high performance comes design freedom. Trespa® Virtuon® offers a broad range of basic, modern and trend-setting colours. Trespa's special production process allows for the product offering of Metallics colours which have unique glittering properties and colour-depth. Diverse colours are complemented by a choice of surface finishes. Architects and designers can specify a smooth finish or a highly tactile aesthetic effect. And through the application of colour, form and finish, Trespa® Virtuon® opens up the possibility to incorporate a unique signature or even the occupant's brand identity into the design – for interiors that are expressive and highly individual as well as exceptionally functional.

Easy installation

Design is important, yet fabrication and installation are critical to a project's success. Trespa® Virtuon® can be machined similar to high-quality hardwood using standard carpentry tools. With a variety of installation methods and finishing options, Trespa® Virtuon® frees the project team to create interiors with a personal touch. For more details about installation, please check www.trespa.info

Fire behaviour

Two classes of Trespa® Virtuon® are available³: Standard grade and enhanced Fire-Retardant grade (FR). Please check www.trespa.info for the standard delivery programme in your region.

¹ Visit www.trespa.info or contact your local Trespa representative for more details.
² E-coli and Staphylococcus aureus have been tested following the Japanese Industrial Standard JIS Z 2801:2000. The number of colony forming units (cm²) on product surface has been reduced by 99.99% after 24 hours for both tests.
³ Availability limited – consult www.trespa.info or contact your local Trespa representative for more details.



Schuster, Pechhold, Schmid Architekten GmbH, Germany

COLOUR COLLECTION

Metallics															
	■ = Single sided	■ = Double sided	■ = Duocolour		■ = Single sided	■ = Double sided	■ = Duocolour		■ = Single sided	■ = Double sided	■ = Duocolour		■ = Single sided	■ = Double sided	■ = Duocolour
Code	Rock	Silk	Rock	Silk	Rock	Silk	Rock	Silk	Rock	Silk	Rock	Silk	Rock	Silk	Rock
J 06.4.1 Amber															
J 12.4.2 Garnet Red															
J 20.4.2 Northern Light															
J 21.3.4 Azurite Blue															
J 24.3.3 Lagoon															
J 34.3.1 Bottle Green															
J 40.4.3 Mustard Yellow															
J 51.0.1 Aluminium Grey															
J 51.0.2 Urban Grey															
J 21.8.1 Graphite Grey															
K 08.3.1 Stone Grey															
K 06.5.1 Toscana Greige															
K 06.7.1 Natural Greige															
K 08.2.3 Salmon															
K 06.3.5 Ochre															
K 08.4.5 Rusty Red															
K 10.4.5 Sienna Brown															
K 12.3.7 Carmine Red															
K 12.1.8 Passion Red															
K 10.1.8 Red Orange															
K 11.4.4 English Red															
K 12.6.3 Wine Red															
K 10.6.1 Taupe															
K 16.5.1 Mauve															
K 17.3.5 Cyclam															
K 20.5.2 Lavender Blue															
K 22.4.4 Brilliant Blue															
K 21.5.4 Cobalt Blue															
K 22.6.2 Dark Denim															
K 20.7.2 Dark Blue															
K 21.7.0 Steel Grey															
K 03.4.0 Silver Grey															
K 03.1.0 Pastel Grey															
K 22.3.1 Ocean Grey															
K 28.2.1 Aquamarine															
K 24.4.1 Steel Blue															
K 22.2.4 Powder Blue															
K 23.0.4 Mineral Blue															
K 20.2.3 Light Viola															
K 22.1.6 Royal Blue															
K 24.0.3 Polar Blue															
K 30.3.2 Verdigris															
K 32.2.1 Translucent Green															
K 37.2.3 Spring Green															
K 37.0.8 Lime Green															
K 36.3.5 Turf Green															
K 32.7.2 Dark Green															
K 28.6.2 Mid Green															
K 90.0.0 Black															

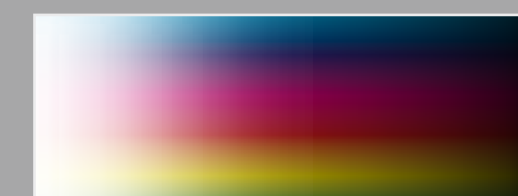
Finishes



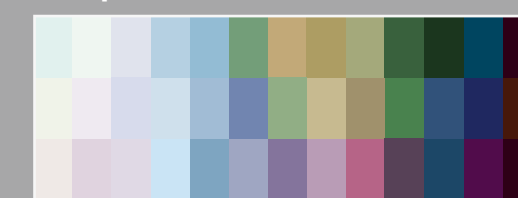
COLOUR YOUR IMAGINATION

Trespa® Virtuon® panels are available in a wide choice of standard colours. These panels have the ability to transform, enhance or even add new dimensions to your design.

Trespa® Virtuon® Panels can be custom-made in special project colours which allows to add identity to your design. Trespa® Virtuon® is not just beautiful – it is exceedingly robust and durable so today's vision will remain tomorrow's reality.



Project colours



Architectenbureau Schoonhoven, Belgium

